

We are at EMO Hannover 2025

EMO Hannover 2025, one of the biggest International Machine Tool exhibitions, will be held from 22nd to 26th, September this year in Hannover, Germany.

In the rapidly changing world of the global situation, in order to correspond to various needs of the customers, we will exhibit two machines as below. We would like to hear your various requests.

We look forward to your visit.

President **KIWA Nobumasa**



Our booth number is #B45, Hall 15

1) Horizontal Machining Center **KH-4200kai**

Compact / Powerful / High Speed

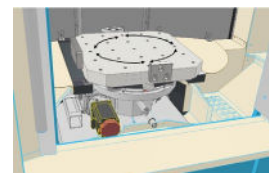
- Full-fledged HMC with only 1,620 mm width
(Control Box is not included.)
Suitable for customization in line production
- Secured X stroke of 560mm (Y 660 / Z 560 mm)
although equipped with ATC magazine
along the side of the machine body
- High torque spindle
- X/Y/Z rapid traverse: 90 m/min.



OPTION



Automation



Auto Index
at Set-up Station

2) Horizontal Machining Center **KH-4500kai with 6-pallet APC**

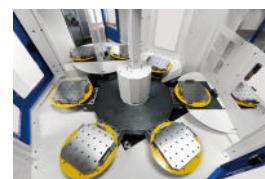
Our Flagship Model providing Field Expandable Options

- Smaller Footprint, Larger Machine Capacities
- High-speed features / High torque spindle for Heavy-duty cutting
- Field Expandable APC and ATC

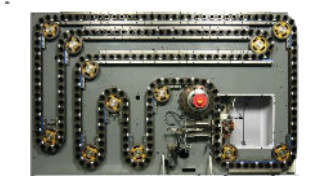


6-pallet machine

OPTION



2APC → 6/8APC



120ATC → 240ATC

We have opened Showroom

➤ KIWA MACHINERY's History



In the history corner of KIWA MACHINERY, you can see our old products that have contributed to our growth. For example, the early model of the upright drilling machine, "branch-type upright drilling machine" which was our main product in the past, "NC turret lathe" adopted advanced NC technology at the time, and so on.

We will also exhibit various newly developed products as they become available, showing our cutting-edge technologies.

150th
ANNIVERSARY
2019

Established in 1869.

This year marks our 157th anniversary.

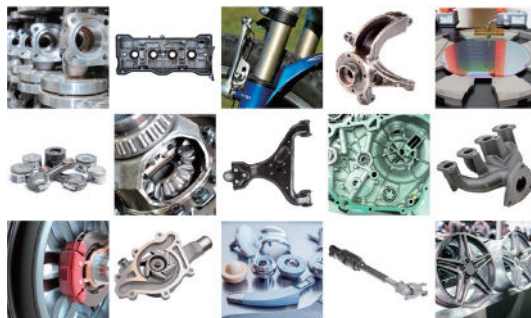
➤ Test cuttings are also available



We display various models in our showroom.

- You can check actual machines.
- We do test cuttings based on your request.
- We offer immediate delivery machines at attractive prices.

We are looking forward to your visit.



KIWA Japan

KIWA MACHINERY CO., LTD.

522-51 Harade Kuramochi-Cho, Nabari, Mie

518-0752, JAPAN

TEL : +81 595-64-4758 FAX : +81 595-64-7529

E-mail : overseas@kiwa-mc.co.jp URL : www.kiwa-mc.co.jp